

MITCHELL PHOTOGRAPHY CLUB INC.



PO BOX 474, Kilmore 3764

www.mitchellphoto.org

November 2009

From the President

At our October meeting, the 2009 Photographic Competition prizes and certificates were presented. 151 images were received from 55 photographers. The major prize winners were Peter Barlow, Susan Ashworth, Brayden Waddell, Caitlin Doyle and Robin Audehm. Highly Commended prizes were awarded to Tobias Brown, Theresa Clark, Tahlia Denton, Dorothy Fountain, Danielle Kimel, Peter Matters, Carolyn McLean, Katherine Stanley, Russell Taylor, Euan Walker, Tom Warren and Howard Cooper. Thanks to Denisse Crech from Ray White Wallan and Cr Graeme Coppel representing the Mitchell Tourism Development Group for presenting the prizes and certificates.

The theme was “water” and many interesting images were presented – congratulations to Theresa Clark for her wonderful image of her daughter at the beach. Thanks to John Fitzherbert for judging our images.

The subject for November is portraits and will be “hands on” - please bring cameras, speedlights, triggers, snoots etc (remember to charge the batteries). The theme is “dawn or dusk” and I expect to see many interesting images. If you see a new face our monthly meetings have a chat and make them feel welcome.

If anyone asks about the club and require more information please refer them to our website (www.mitchellphoto.org) – not only is there a link “About Us” but some of our images can also be viewed.

Please let us have your suggestions for discussions and/or workshops – would anyone like a workshop on mat cutting, the basics of photography, camera controls or maybe flash photography? (talk to a committee members or send an email to howard38@hotmail.com).

Remember to get your camera out as often as possible!

Cheers

Howard

Next meeting 18th November

Please bring files of your images so Manfred can upload them on our website.

President: Howard Cooper. *V/Pres. And News letter Editor:* Euan Walker. *Secretary:* Nicki Doyle
Treasurer: Raymond Fagg. *Membership Secretary:* Greg Marshall. *IT Manager:* Manfred Audehm
Members: Doug Kentish and John Curran

The Open Competition has been the highlight of our year, and, in his typical modest manner, our President, Howard Cooper, understates the huge effort put in by him into its organisation. Sponsors are not found easily, and dealing with the endlessly changing Shire employees was a testing experience.

Why so few of our Members took part is a mystery to us. Was it lack of interest, a promise of “IMGONNA” that passed its use by date (a frequent failing in this writer), or had we failed, as a committee, to alert the Members with enough reminders of the coming event.

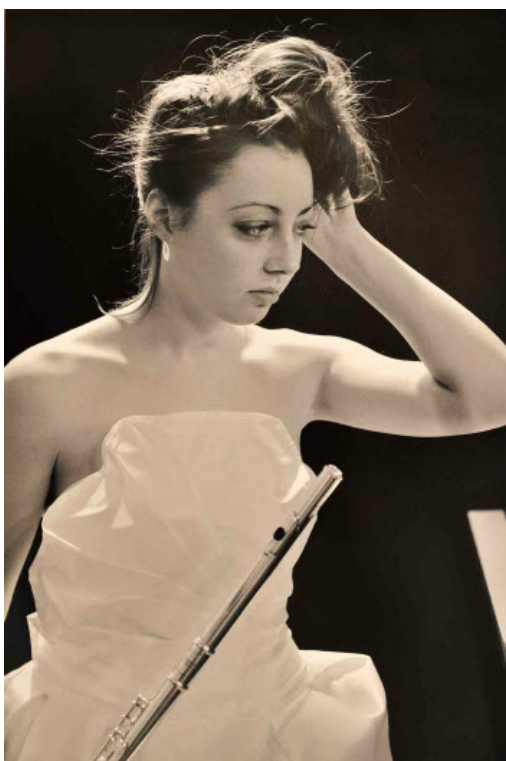
PLEASE TELL US YOUR OPINION AND COMMENTS ABOUT THE ORGANISATION OF THE COMPETITION SO THAT LESSONS CAN BE LEARNT FOR NEXT YEAR.

A very gratifying side benefit of the publicity surrounding the Competition is in alerting local Photographers of the existence of our club. **Welcome to new members,** Peter Barlow, Angela & Tom Warren, Carolyn Maclean, Peter Matters, Braydon (and Nicole) Weddel, all winners, and Jennifer and Phil Strike.

Peter Barlow was Overall winner with this stunning monochrome named “After the Fires”

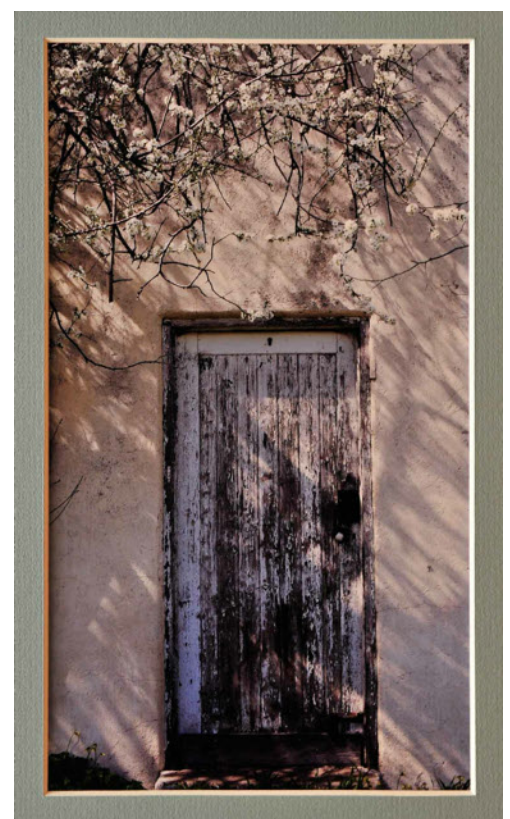


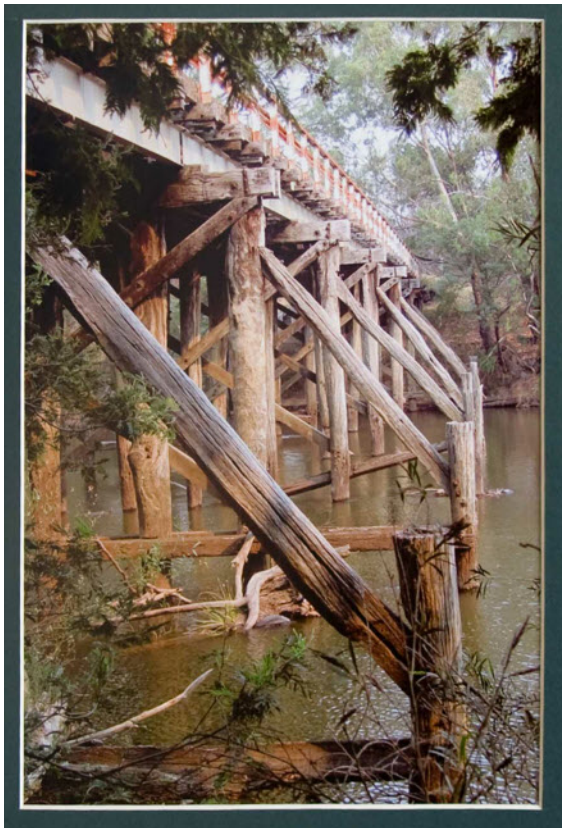
AND Open winner Portrait of a lady Flautist from Hidden Valley



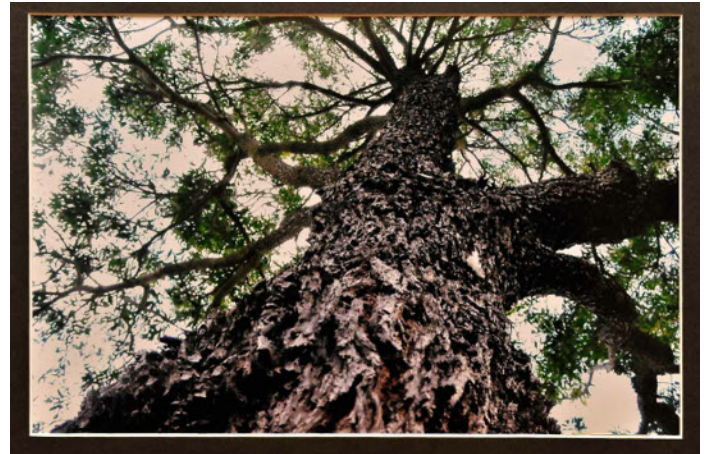
A Selection of the Best exhibits are on display until the end of January at the Shire Libraries. Seymour has them now, and they will be hung at Broadford, Kilmore and Wallan at dates to be announced. Spare a moment to view them. We have some excellent Photographers in our Community

Susan Ashworth
Won the Novice open,
With this Pastel coloured
old door and wall
Well seen and executed





Robin Audehm deserved her prize for best landscape with this delicate record of an old Goulburn bridge.



Young Braydon Weddell was the best Primary School entrant. Mother Nicole tells us that they only have this one tree in their backyard, and it is to any ordinary observer very ugly. Braydon thought otherwise and took several pictures to prove it.

THERE ARE OVER 60 MORE ON SHOW IN THE SHIRE LIBRARIES. DROP IN AND ENJOY.

REMEMBER TO ENTER SOME PRINTS IN THE COMING KILMORE SHOW
Its on our patch and we should have a big presence!!

I attended the 150th Whittlesea Show last week end. Over 500 Photographic entries , some of very high standard. How many MPC entries there were I could not ascertain, but we got a First, a Second, two Thirds and a Highly Commended, with the associated wider awareness of MPC.

Darren Rokahr

Opening Hours

Mon-Fri 8am-6pm

11 Wellington St., St Kilda

9525 2586

print@cpldigital.com.au



- * Exhibitions - Colour / B&W
- * Display Images / Stands
- * Fine Art Reproduction
- * Mounting & Laminating
- * Scanning / Archiving / Web
- * E6 / C41 Processing & Printing
- * Traditional B&W Services
- * Silver Halide prints upto 50x108"

CPL services is a high quality professional digital photographic lab. We cater for the high volume professional photographer, design studio, graphic designer, seasonal photographer, students and amateurs alike. We have many different services all under the one roof and also stock a large range of Fuji and Kodak film. All the information you need is on the web site, however if you need more help call 9525 2586 and have a chat with a member of our friendly staff.

www.cpldigital.com.au

Darren Rokahr kindly donates a high quality Enlargement of the Monthly Competition winner' as a prize. Support him when you need that Special Photo enlarged for display.

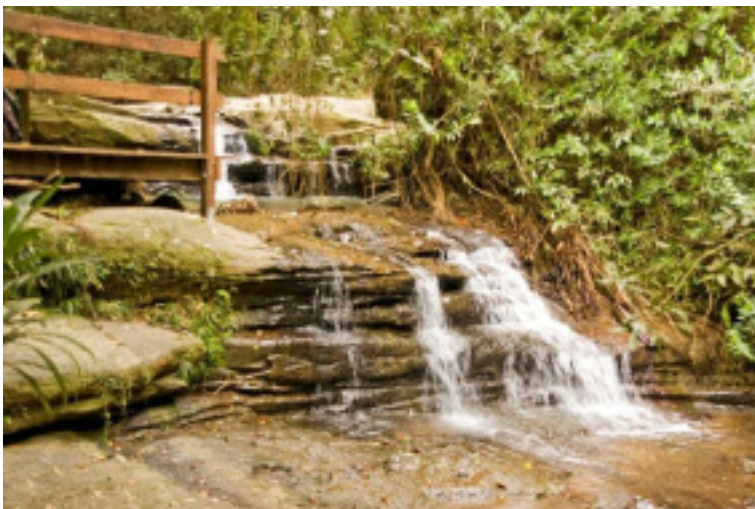
The October meeting subject was “WATER”, and this stimulated an amazing range of interpretations.



John Fitzherbert proved a masterly judge with empathy for the exhibitors intentions and praise and constructive comments
He chose Terry Clarke's delightful beach scene of her daughter as the Picture of the Month

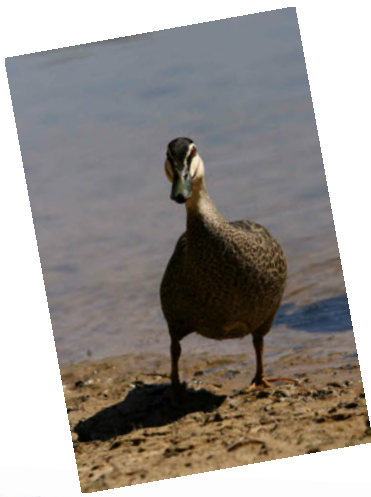


Howard Cooper had a very different view of wetness and kept his feet dry.
It would be easy to pass this grey wet scene and not see the picture.



Greg Marshall found Whales and Waterfalls

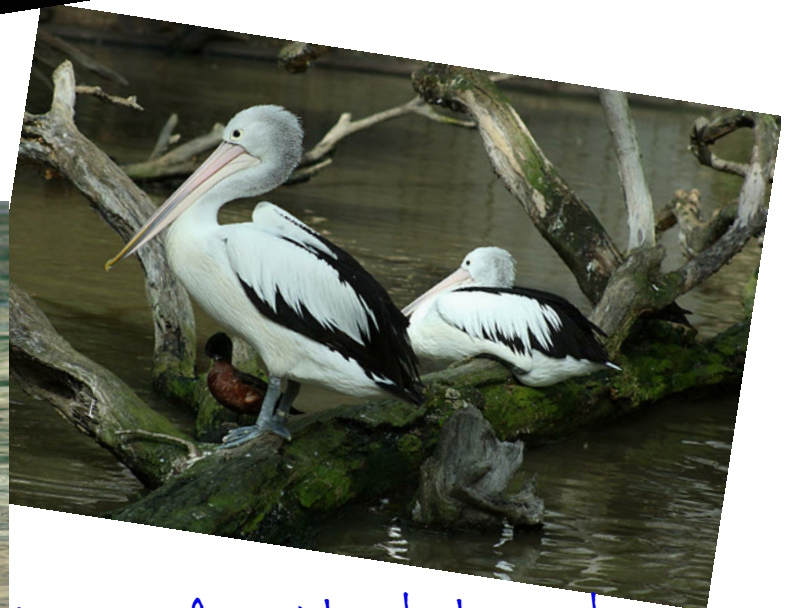




GLENELG
~ SOUTH AUSTRALIA ~



Moonlight Fields



A page of quality photography.
Thank you James Sheppard



Les Williams sent these well seen shots. I suppose flowers do contain about 80% water....but beautiful anyway.



How did Nicki Doyle catch this vortex?
Very impressive technique.



More from Les.



Robyn Audehmsaw the light
and so did Pat Curran

Finally some Quick Photoshop Tips

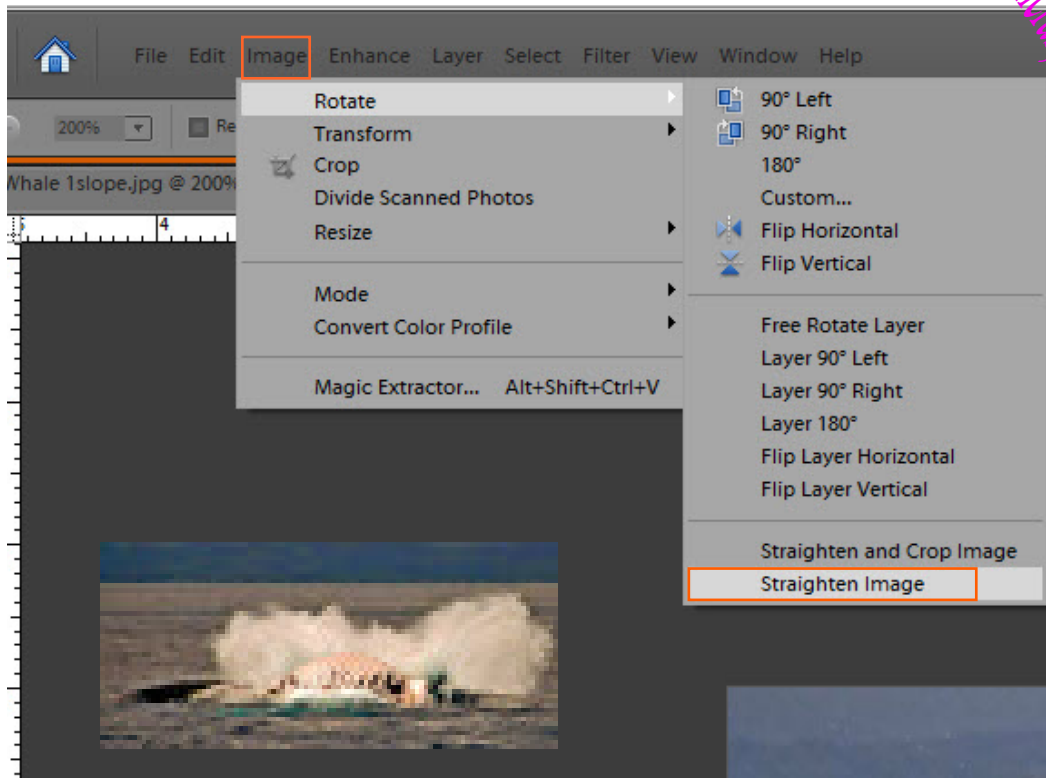


HORIZONS should be HORIZONTAL!

In Photoshop elements go to Image__rotate__straighten image.

Its done for you...that easy!!

Remember cameras and lighting for the November meeting



THERE IS MORE IN BLACK SHADOWS IF YOU LOOK!!

Look in ENHANCE__LIGHTING__SHADOWS & HIGHLIGHTS
And play with the sliders

